

# THE RIDGEPRO™

## USER'S SAFETY MANUAL



[www.theridgepro.com](http://www.theridgepro.com)

### IMPORTANT!!

**This temporary roof anchor device is intended to be used in compliance with OSHA's Subpart M (§1926.500) as part of a personal fall protection system under the oversight of a competent person designated by the employer.**

Left Intentionally Blank



# Table of Contents

---

Warnings and Cautions	5
For models on or after July 15, 2019	6-8
Instructions	6
Parts List	8
For models prior to July 15, 2019	10-13
Instructions	10
Parts List	12
Preparing the Extension Pole	13



Left Intentionally Blank

# WARNINGS AND CAUTIONS



## WARNINGS

This device is intended for temporarily anchoring personal fall protection systems on gable roofs for a single user ONLY.

All parts must be installed in the proper location according to the manufacturer's instructions prior to use by a trained certified operator. The employer's failure to provide and/or the operator's failure to read, understand and follow the manufacturer's instructions on the use of this device could result in serious personal injury and/or death.

(§1926.503) The employer shall provide a fall protection training program assuring that a competent person instructs and certifies each employee in the recognition and avoidance of unsafe conditions and the regulations applicable to his work environment to control or eliminate any hazards. (1926.28(a)) The employer is responsible for requiring the wearing of appropriate personal protective equipment (PPE) in all operations where there is an exposure to hazardous conditions.

(§1926.503(a)(2)(ii)) The competent person for fall protection shall be responsible to approve, erect, maintain, disassemble, inspect all Personal Fall Arrest Systems (PFAS) components before each shift and after any event which could affect its strength or dependability. Defective PPE shall be immediately removed from service by the competent person and tagged DO NOT USE.

## CAUTIONS

This device may conduct electricity. Maintain a safe distance from potentially energized power lines at all times (§1926.416(a)(1)). Failure to do so could result in serious personal injury and/or death.

When possible, carry The RIDGEPRO™ by the anchor device itself instead of by the attached extension pole (not included). Long-term, weight-related stress could cause the threaded tip (in some models) of the extension pole to break.



# OPERATOR'S SAFETY MANUAL

## OPERATOR'S INSTRUCTIONS:

1. The Competent Person (user) shall visually inspect The RIDGEPRO™ for defects or damages BEFORE any operation requiring its use. If defects or damages are observed or suspected, the device shall be immediately removed from service and tagged DO NOT USE. Contact the manufacturer for further advice and instructions.
2. Visually inspect the area of the roof you intend to access. Be sure there are no obstructions, such as skylights, dormers and/or exhaust vents that would prevent this device from straddling the ridge in its intended position. Always maintain a safe distance from any power lines that may be near your working area.
3. Use a pitch gauge, inclinometer, or smart level to determine the slope of the working area/roof deck on which The RIDGEPRO™ will be installed. The RIDGEPRO™ has seven pitch settings to choose from, identified by numbers on the "pitch grid (part no. 3) of the main body (part no. 1). These numbers indicate the amount of inches of rise over a 12-inch run.
4. Adjust the pitch receiver (part no. 2) of The RIDGEPRO™ by removing the clevis pin (part no. 4) and rotating the pitch receiver to the desired roof pitch setting on the pitch grid (part no. 3). Once in place, re-insert the clevis pin into the pitch receiver and close the clevis pin hasp to secure the pitch receiver at the selected pitch. Regularly inspect this clevis pin during use to confirm the hasp remains secured.
5. Next, slide the open end of an extension pole (not included) over the male end at the back of The RIDGEPRO™ device. Line up the holes of both The RIDGEPRO™ and the extension pole. Insert a locking pin (part no. 5) through all holes to prevent the extension pole from disconnecting while rotating the device to its intended position on the ridge.
6. The user must connect a 5/8" lifeline to the steel shackle (part no. 6) located beneath the wheels of The RIDGEPRO™. The lifeline shall be of a suitable length for the distance from the ladder to the ridge.

7. *Optional: Next, the user will attach a 3-foot roofer's lanyard (not included) to the dorsal D-ring of his/her harness (not included) and to the lifeline (not included) using the integral rope-grab device (not included).*

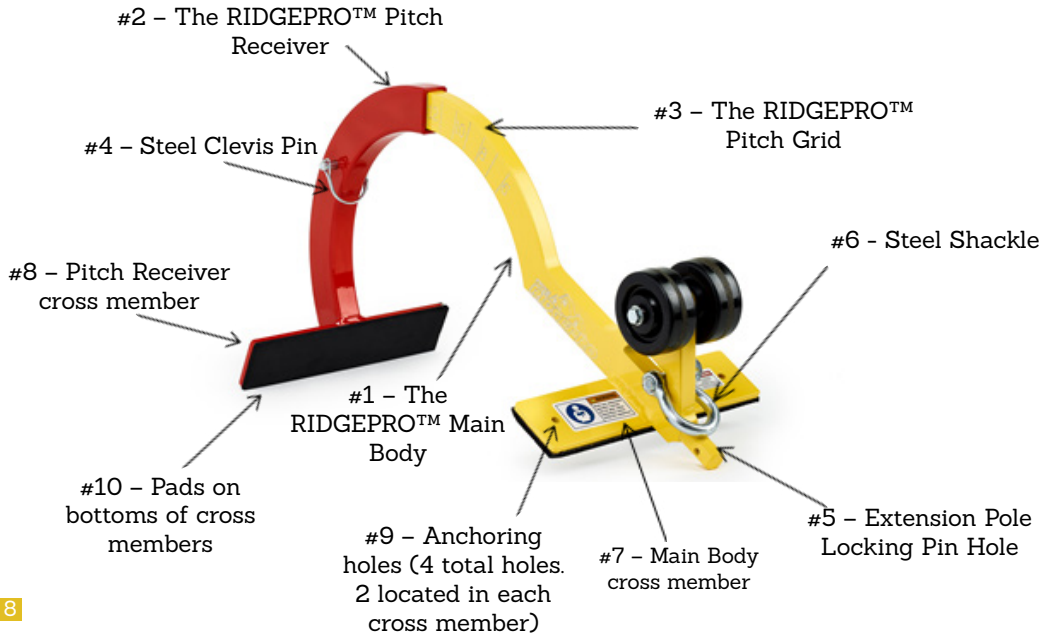
8. After ascending the ladder and before dismounting, rest the wheels of The RIDGEPRO™ on the roof surface. **(Note: The top of the ladder shall either extend 3 feet (min.) above the edge of the eave or walk-through ladder extension handles shall be used).** Use caution not to stand on or snag the lifeline during extension or use of the device. Once at the peak, rotate the extension pole so that The RIDGEPRO™ straddles the ridge and makes full contact with both slopes of the roof. Pull firmly on the lifeline to be sure The RIDGEPRO™ is positioned securely before dismounting the ladder.

9. While holding onto the lifeline, safely dismount the ladder and begin to ascend to the peak of the roof, directly toward and underneath The RIDGEPRO™ device. **DO NOT begin to laterally traverse the working surface roof deck until the two cross members (part nos. 7 and 8) of The RIDGEPRO™ have been secured to the roof structure by installing (4) 5/16" x 1 1/2" lag bolts (not included) in the holes of the crossmembers.** DO NOT pull the lifeline or the device in an upward motion before anchoring. Such movement may cause The RIDGEPRO™ to lift entirely off the roof surface, leaving the roofer unprotected from falls.

10. Once roof work is complete, the (4) lag bolts anchoring The RIDGEPRO™ shall be removed. Slide The RIDGEPRO™ away from the holes while keeping it on the ridge and seal the four holes with a suitable weatherproof sealant (not included). While keeping the lifeline **BELOW** The RIDGEPRO™, the user shall then carefully descend the roof to the ladder at the eave, keeping the lifeline below the wheels and directly underneath The RIDGEPRO™. Caution shall be used when dismounting the roof to the ladder. **DO NOT** disconnect from The RIDGEPRO™ from the ridge before making a secure 3-point contact on the ladder.

## PARTS LIST:

- Part #1 - The RIDGEPRO™ Main Body
- Part #2 - The RIDGEPRO™ Pitch Receiver
- Part #3 - The RIDGEPRO™ Pitch Grid
- Part #4 - Steel Clevis Pin
- Part #5 - Extension Pole Locking Pin Hole
- Part #6 - Steel Shackle
- Part #7 - Main Body cross member
- Part #8 - Pitch Receiver cross member
- Part #9 - Anchoring holes (4 total holes. 2 located in each cross member)
- Part #10 - Pads on bottoms of cross members







Left Intentionally Blank



# OPERATOR'S SAFETY MANUAL FOR MODELS PRIOR TO JULY 15, 2019

---

## OPERATOR'S INSTRUCTIONS:

1. The Competent Person (user) shall visually inspect The RIDGEPRO™ for defects or damages BEFORE any operation requiring its use. If defects or damages are observed or suspected, the device shall be immediately removed from service and tagged DO NOT USE. Contact the manufacturer for further advice and instructions.
2. Visually inspect the area of the roof you intend to access. Be sure there are no obstructions, such as skylights, dormers and/or exhaust vents that would prevent this device from straddling the ridge in its intended position. Always maintain a safe distance from any power lines that may be near your working area.
3. Use a pitch gauge, inclinometer, or smart level to determine the slope of the working area/roof deck on which The RIDGEPRO™ will be installed. The RIDGEPRO™ has seven pitch settings to choose from that are identified by numbers on the "pitch grid (part no. 3) of the main body (part no. 1). These numbers indicate the amount of inches of rise over a 12-inch run.
4. Adjust the pitch receiver (part no. 2) of The RIDGEPRO™ by removing the clevis pin (part no. 4) and rotating the pitch receiver (part no. 2) to the desired roof pitch setting on the pitch grid (part no. 3). Once in place, re-insert the clevis pin into the pitch receiver and close the clevis pin hasp to secure the pitch receiver at the selected pitch. Regularly inspect this clevis pin during use to confirm the hasp remains secured.
5. **For models prior to July 15th, 2019** Next, twist the threaded male end of the telescoping extension pole (not provided) into the threaded hole located at the back of The RIDGEPRO™ device. Insert the extension pole locking pin (part no. 5) to prevent the extension pole from accidentally disconnecting while rotating the device to its intended position on the ridge. Note: Drilling a pin hole in replacement extension pole tips may be required. (See instructions on page 13)



6. The user must connect a 5/8" lifeline to the steel shackle (part no. 6) located beneath the wheels of The RIDGEPRO™. The lifeline shall be of a suitable length for the distance from the ladder to the ridge.

7. *Optional: Next, the user will attach a 3-foot roofer's lanyard (not included) to the dorsal D-ring of his/her harness (not included) and to the lifeline (not included) using the integral rope-grab device (not included). The lifeline shall be of a suitable length for the distance from the ladder to the ridge.*

8. After ascending the ladder and before dismounting, rest the wheels of The RIDGEPRO™ on the roof surface. **(Note: The top of the ladder shall either extend 3 feet (min.) above the edge of the eave or walk-through ladder extension handles shall be used).** Use caution not to stand on or snag the lifeline during extension or use of the device. Once at the peak, rotate the extension pole so that The RIDGEPRO™ straddles the ridge and makes full contact with both slopes of the roof. Pull firmly on the lifeline to be sure The RIDGEPRO™ is positioned securely before dismounting the ladder.

9. While holding onto the lifeline, safely dismount the ladder and begin to ascend to the peak of the roof, directly toward and underneath The RIDGEPRO™ device. **DO NOT begin to laterally traverse the working surface roof deck until the two cross members (part nos. 7 and 8) of The RIDGEPRO™ have been secured to the roof structure by installing (4) 5/16" x 1 1/2" lag bolts (not included) in the holes of the crossmembers (part nos. 7 and 8).** DO NOT pull the lifeline or the device in an upward motion before anchoring. Such movement may cause The RIDGEPRO™ to lift entirely off the roof surface, leaving the roofer unprotected from falls.

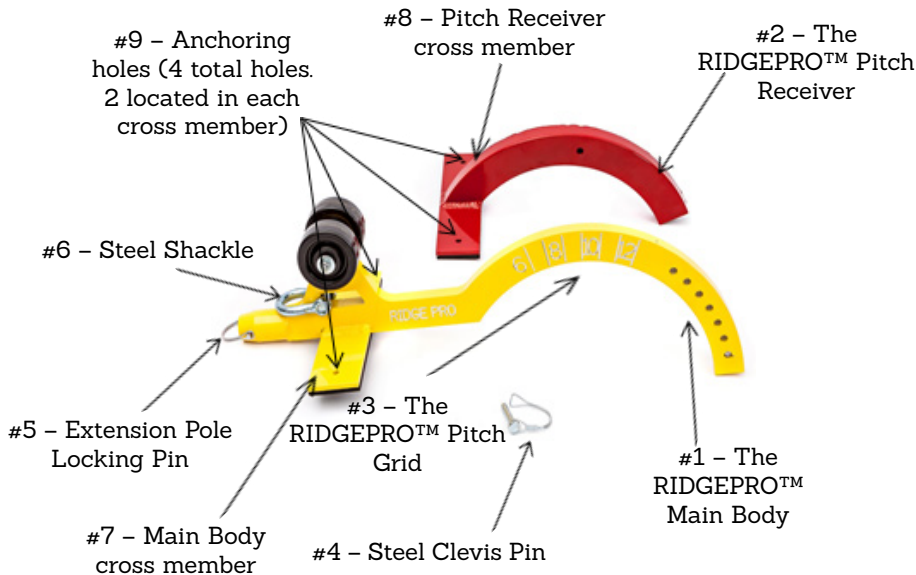
10. Once roof work is complete, the (4) lag bolts anchoring The RIDGEPRO™ shall be removed. Slide The RIDGEPRO™ away from the holes while keeping it on the ridge and seal the four holes with a suitable weatherproof sealant (not included). While keeping the lifeline BELOW The RIDGEPRO™, the user shall then carefully descend the roof to the ladder at the eave, keeping the lifeline below the wheels and directly underneath The RIDGEPRO™. Caution shall be used when dismounting the roof to the ladder. DO NOT disconnect from The RIDGEPRO™ from the ridge before making a secure 3-point contact on the ladder.

For models prior to July 15th, 2019



**PARTS LIST:**

- Part #1 – The RIDGEPRO™ Main Body
- Part #2 – The RIDGEPRO™ Pitch Receiver
- Part #3 – The RIDGEPRO™ Pitch Grid
- Part #4 – Steel Clevis Pin
- Part #5 – Extension Pole Locking Pin
- Part #6 – Steel Shackle
- Part #7 – Main Body cross member
- Part #8 – Pitch Receiver cross member
- Part #9 – Anchoring holes (4 total holes. 2 located in each cross member)
- Part #10 – Pads on bottoms of cross members (not shown)



## PREPARING THE EXTENSION POLE FOR THE LOCKING PIN:

For models prior to July 15th, 2019

Supplies Needed:

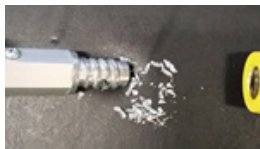
- The RIDGEPRO
- Extension pole (locking is recommended, not nylon-threaded)
- A hand drill
- 1/4 in. drill bit
- 9/32 in. drill bit



STEP 1: Screw the extension pole into the threaded end of The RIDGEPRO™



STEP 2: With a 1/4 in. drill bit, drill through the pre-drilled pilot hole through the extension pole



STEP 3: Remove the extension pole and clean out any metal shavings



STEP 4: Enlarge the hole on the extension pole (not The RIDGEPRO™) to 9/32 in.



STEP 5: Insert the pole back into the threaded end of The RIDGEPRO™ and reinsert the locking pin

Left Intentionally Blank

Left Intentionally Blank



**THE PREMIUM DEVICE FOR STEEP-SLOPE ROOFING SAFETY!**

Not affiliated with or endorsed by Ridge Tool Company or RIGID, Inc.

Strawder Family Innovations, LLC  
20 Commerce Drive Suite 135  
Cranford, NJ 07016

Phone: +1 (908) 603-6266  
Email: [support@theridgepro.com](mailto:support@theridgepro.com)

[www.theridgepro.com](http://www.theridgepro.com)